

# Interventional Spine

Vertebral Compression Fracture



Your partner in healthcare™

# Over 28 Years of Leadership in Interventional Spine

Located in Florida, Pan Medical U.S. Corp. has specialized in the creation and development of cutting edge products for the balloon industry for almost three decades. Innovation, Quality and Service are the key attributes that drive the company and support the manufacture, sales and distribution of PanMed products.

## History

PanMed has many years of experience within the interventional radiology and medical balloon industry. From humble beginnings creating balloons for PTA and embolectomy catheters, the company has grown its strengths to include other areas such as the spine while continuing to be at the forefront of innovation in catheter, balloon and device creation.

## Quality Policy

Our goal is to continue to supply high quality medical devices to healthcare professionals. All products supplied by PanMed undergo strict quality control to secure complete customer satisfaction and ensure that their products fully comply to national regulations.

## Products

With extensive experience in the design, development and manufacture of premium quality medical devices, PanMed is a specialist in balloon catheters. We manufacture some of the highest quality kyphoplasty balloons in the market, and continue to push our technology to create stronger and smaller balloons for the industry. At PanMed, we continue to create the best products for patient and surgeon alike while being cost effective. Our kyphoplasty product line continues to grow, adapt, and innovate to be the leader in vertebral compression fractures.

# InterV

kyphoplasty a proven technique, precision engineered in the USA

## Features

- Available in 8 gauge.
- High pressure up to 27 ATM / 400 PSI.
- American made.

## Balloon Specifications

Product Code	Balloon Length (mm)	Rated Burst (ATM/PSI)	Balloon Diameter (mm)	Volume (cc)
INTV-10	10	27/400	16	4
INTV-15	15	27/400	14	4
INTV-20	20	27/400	16	6

## Product Codes

### InterV Kits (Traditional Access)

#### Single/Unilateral Kit without Cement

- INTV-XX-TSK
- x1, Direct Working Cannula - Diamond Tip
  - x1, Stylet for Cannula - Bevel Tip
  - x2, Kirshna Wires (x1 Diamond, x1 Round)
  - x1, Curette
  - x1, Drill
  - x1, Balloon Catheter (Balloon Size: 10, 15, 20)
  - x1, Digital Inflation Device

#### Double/Bilateral Kit without Cement

- INTV-XX-TDK
- x2, Direct Working Cannulas (x1 Diamond Tip, x1 Bevel)
  - x4, Kirshna Wires (x2 Diamond, x2 Round)
  - x1, Curette
  - x1, Drill
  - x2, Balloon Catheter (Balloon Size: 10, 15, 20)
  - x1, Digital Inflation Device

### InterV Kits (Direct Access or One Step)

#### Single/Unilateral Direct Single Kit

- INTV-XX-DSK (8 gauge)
- x1, Direct Working Cannula - Diamond Tip
  - x1, Stylet for Cannula - Bevel Tip
  - x1, Drill
  - x1, Balloon Catheter (XX Balloon Size: 10, 15, 20)
  - x1, Digital Inflation Device
  - x4, Cement Delivery Cannula

#### Double/Bilateral Direct Double Kit

- INTV-XX-DDK (8 gauge)
- x2, Direct Working Cannulas - Diamond Tip
  - x1, Stylet for Cannula - Bevel Tip
  - x1, Drill
  - x2, Balloon Catheter (XX Balloon Size: 10, 15, 20)
  - x2, Digital Inflation Device
  - x6, Cement Delivery Cannula



# InterVMini

Smaller profile, wider options, less trauma.

## Features

- Both 10 and 11 gauge available.
- High pressure up to 27 ATM / 400 PSI.
- Multi kit configuration.

## Balloon Specifications

Product Code	Balloon Length (mm)	Rated Burst (ATM/PSI)	Balloon Diameter (mm)	Volume (cc)
INTVMN-10	10	27 / 400	16	4
INTVMN-15	15	27 / 400	14	4
INTVMN-20	20	27 / 400	16	6

## Product Codes

### Single/Unilateral Direct Single Kit

INTVM-XX-DSK (10 gauge)	x1, Direct Working Cannula - Diamond Tip
INTVMN-XX-DSK (11 gauge)	x1, Stylet for Cannula - Bevel Tip
	x1, Drill
	x1, Balloon Catheter (XX Balloon Size: 10, 15, 20)
	x1, Digital Inflation Device
	x4, Cement Delivery Cannula

### Double/Bilateral Direct Double Kit

INTVM-XX-DDK (10 gauge)	x1, Direct Working Cannula - Diamond Tip
INTVMN-XX-DDK (11 gauge)	x1, Direct Working Cannula - Bevel Tip
	x1, Drill
	x2, Balloon Catheter (XX Balloon Size: 10, 15, 20)
	x2, Digital Inflation Device
	x6, Cement Delivery Cannula

### Special Injection Kit/Balloon and Cement

INTVM-XX-SIKBC (10 gauge)	x1, Direct Working Cannula - Diamond Tip
	x1, Direct Working Cannula - Bevel Tip
	x1, Balloon Catheter (XX Balloon Size: 10, 15, 20)
	x1, Digital Inflation Device
	x1, Coaxial Cannula with Tuohy Connection
	x1, Osteoflex Cement with Mixer
	x1, MaxInject Gun

### Single Balloon Kit

INTVM-XX-SBK (10 gauge)	x1, Direct Working Cannula - Diamond Tip
INTVMN-XX-SBK (11 gauge)	x1, Stylet for Cannula - Bevel Tip
	x1, Balloon Catheter
	(XX Balloon Size: 10, 15, 20)
	x1, Digital Inflation Device
	x1, Coaxial Cannula with Tuohy Connection

INTVM-DWCd	x1, 10 Gauge Direct Access Diamond Tip Cannula
INTVMN-DWCb	x1, 11 Gauge Direct Access Bevel Tip Cannula
INTVM-Sb	x1, 10 Gauge Stylet for Cannula - Bevel Tip
INTVMN-Sb	x1, 11 Gauge Stylet for Cannula - Bevel Tip
INTVM-CC	x1, 10 Gauge Coaxial Cannula with Tuohy Connection
INTVMN-CC	x1, 11 Gauge Coaxial Cannula with Tuohy Connection
INTVM-CDC	x1, 10 Gauge Cement Delivery Cannula
INTVMN-CDC	x1, 11 Gauge Cement Delivery Cannula
INTV-MAL	x1, Mallet
INTVM-DRL	x1, 10 Gauge Drill
INTVMN-DRL	x1, 11 Gauge Drill
INTVM-VBN	x1, 10 Gauge Vertebral Biopsy Needle
INTVMN-VBN	x1, 11 Gauge Vertebral Biopsy Needle

# InterVFlex

The only pre-curved kyphoplasty catheter.



## Features

- Access to midline through unipedicular access.
- Less trauma.
- Time saving.

## Balloon Specifications

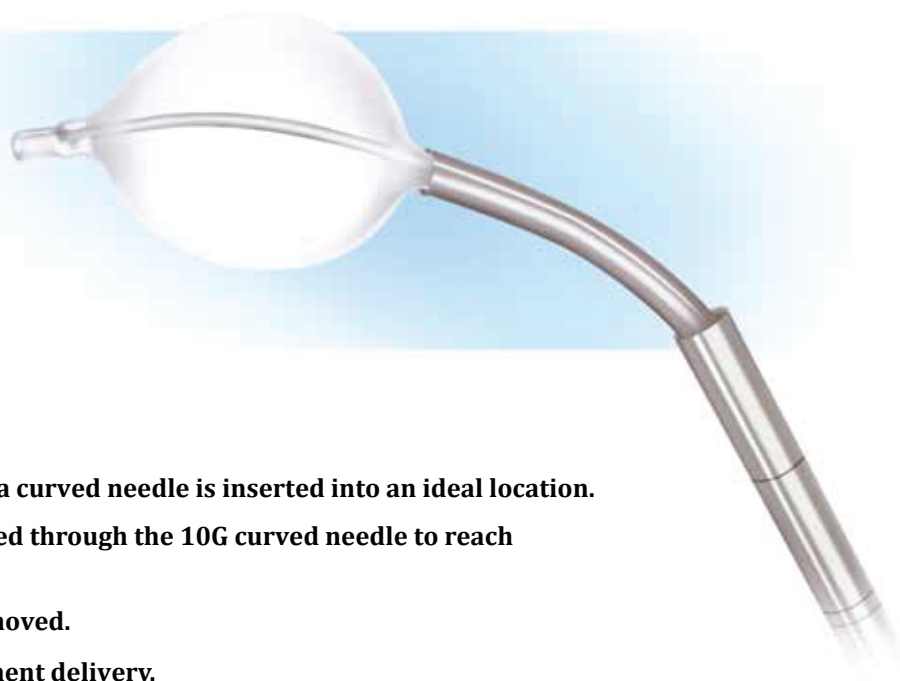
Product Code	Balloon Length (mm)	Rated Burst (ATM/PSI)	Balloon Diameter (mm)	Volume (cc)
INTVM(N)-20-FL	20	27/400	16	6

## Product Codes

Product Code	Product	Contents
INTVM-20-FLDSK	10 Gauge 20mm Balloon Flex Direct Unilateral Kit	x1, Direct Working Cannula - Diamond Tip x1, Stylet for Cannula - Bevel Tip x1, 20mm Flex Balloon Catheter x1, Digital Inflation Device x1, Curved Needle
INTVMN-20-FLDSK	11 Gauge 20mm Balloon Flex Direct Unilateral Kit	x1, Direct Working Cannula - Diamond Tip x1, Stylet for Cannula - Bevel Tip x1, 20mm Flex Balloon Catheter x1, Digital Inflation Device x1, Curved Needle
INTVM-FLNK	Curved Needle w/Cannula	x1, 10 Gauge Direct working Cannula - Diamond Tip X1, 10 Gauge Curved Needle
INTVMN-FLNK	Curved Needle w/Cannula	x1, 11 Gauge Direct Working Cannula - Diamond Tip X1, 11 Gauge Curved Needle

# Curve Plus

The simplest, most complete  
curved kyphoplasty procedure.



## Features

- A unipedicular approach is created and a curved needle is inserted into an ideal location.
- A new 510K cleared 13G balloon is passed through the 10G curved needle to reach the optimal position.
- The balloon is inflated, deflated and removed.
- The curved needle stays in place for cement delivery.

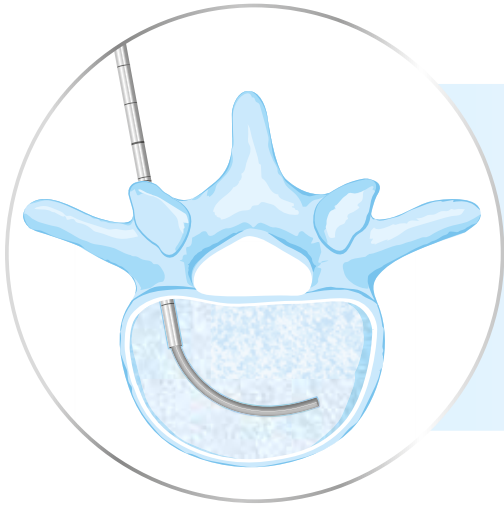
## Balloon Specifications

Product Code	Balloon Length (mm)	Rated Burst (ATM/PSI)	Balloon Diameter (mm)	Volume (cc)
INTVMC-15-FLDSK	13	27/400	10	2
	16	27/400	14	3
	19	27/400	16	4
INTVMC-20-FLDSK	19	27/400	12	2
	20	27/400	14	3
	22	27/400	16	4

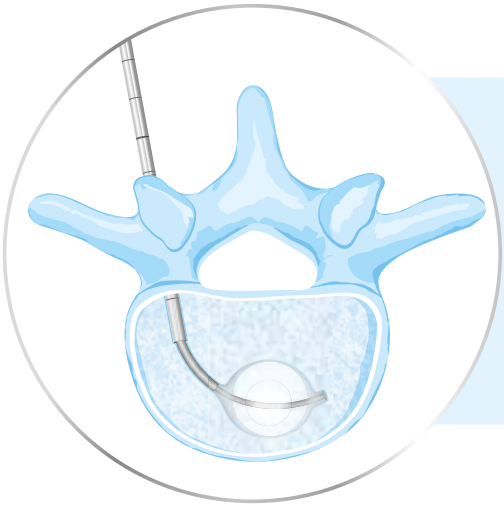
## Product Codes

	Product	Contents
INTVMC-15-FLDSK	CurvePlus	x1, Direct Working Cannula - Diamond Tip x1, Stylet for Cannula - Bevel Tip x1, 13 Gauge 15mm Long Shaft Balloon x1, Digital Inflation Device x1, Curved Needle
INTVMC-20-FLDSK	CurvePlus	x1, Direct Working Cannula - Diamond Tip x1, Stylet for Cannula - Bevel Tip x1, 13 Gauge 20mm Long Shaft Balloon x1, Digital Inflation Device x1, Curved Needle

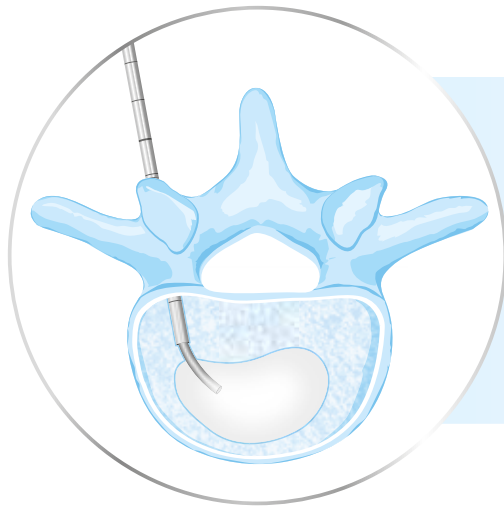
# **The simplest, most complete curved kyphoplasty procedure.**



A single curved needle  
creates a pass for a balloon.



Deploys a balloon.



Delivers cement.

**all in one**



# InterVMicro

Smaller profile, wider options, less trauma.

## Features

- True 13 gauge kyphoplasty system.
- Pressure up to 27 ATM / 400 PSI.

## Balloon Specifications

Product Code	Balloon Length (mm)	Rated Burst (ATM/PSI)	Balloon Diameter (mm)	Volume (cc)
INTVMC-10	13	27/400	12	2
	16	27/400	15	3
INTVMC-15	13	27/400	10	2
	16	27/400	14	3
INTVMC-20	19	27/400	16	4
	19	27/400	12	2
	20	27/400	14	3
	22	27/400	16	4

## Product Codes

Product Code	Product	Contents
INTVMC-XX-DSK	13 Gauge Direct Unilateral Kyphoplasty (Micro)	x1, Direct Working Cannula - Diamond Tip x1, Stylet for Cannula - Bevel Tip x1, Drill x1, Balloon Catheter (XX Balloon Size: 10, 15, 20) x1, Digital Inflation Device x4, Cement Delivery Cannula
INTVMC-XX-DDK	13 Gauge Direct Bilateral Kyphoplasty (Micro)	x1, Direct Working Cannula - Diamond Tip x1, Direct Working Cannula - Bevel Tip x1, Drill x2, Balloon Catheter (XX Balloon Size: 10, 15, 20) x2, Digital Inflation Device x6, Cement Delivery Cannula
INTVMC-10		x1, 13 Gauge 10mm Balloon Kyphoplasty Catheter (Micro)
INTVMC-15		x1, 13 Gauge 15mm Balloon Kyphoplasty Catheter (Micro)
INTVMC-20		x1, 13 Gauge 20mm Balloon Kyphoplasty Catheter (Micro)
INTVMC-DWCd		x1, 13 Gauge Direct Access Diamond Tip Cannula (Micro)
INTVMC-Sb		x1, 13 Gauge Stylet for Cannula - Bevel Tip (Micro)
INTVMC-CC		x1, 13 Gauge Coaxial Cannula with Tuohy Connection (Micro)
INTVMC-CDC		x1, Cement Delivery Device
INTV-MAL		x1, Mallet
INTVMC-DRL		x1, Drill (Micro)
INTVMC-VBN		x1, 13 Gauge Vertebral Biopsy Needle (Micro)
INTVMC-DCDK		x1, 13 Gauge Double Cement Delivery Kit (Micro) x6



## Cement Delivery

### Features

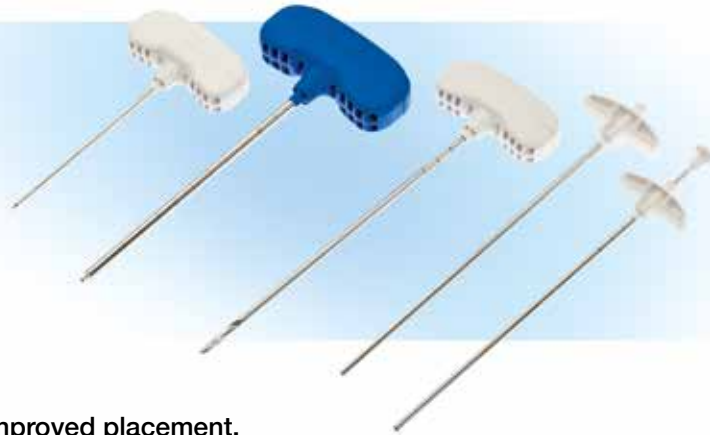
- Cement delivery guns available.
- Keep hands away from the radiation field.
- Time saving.



## Access Cannula and Tools

### Features

- Traditional and direct access kits available.
- 8, 10, 11 and 13 gauge available.
- Graduation marking on each instrument for improved placement.
- Ergonomic handles for ease of use.



## Digital Inflation Device

### Features

- With vac lock syringe.
- PSI and ATM settings.
- Large screen for better visibility.



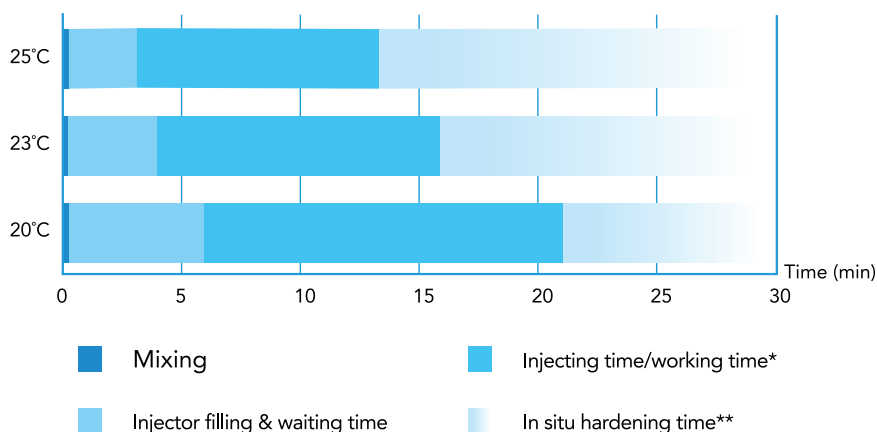
# Osteoflex

A PMMA bone cement, specially designed for percutaneous bone augmentation procedures. Its composition has been optimized to give the best properties to the surgeons to treat patients in a safe way.



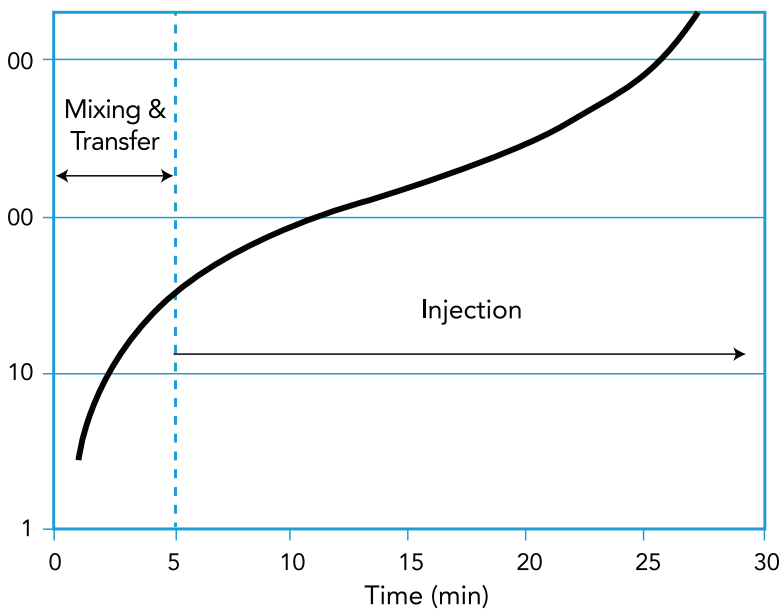
## Quick preparation

No waiting time. The paste constitution corresponds to the viscosity preventing leakage. Still injectable up to 18 minutes at 68°F.



## Long working time

The viscosity curve of OSTEOFLEX® follows a particular profile with a long working time up to 18 minutes.

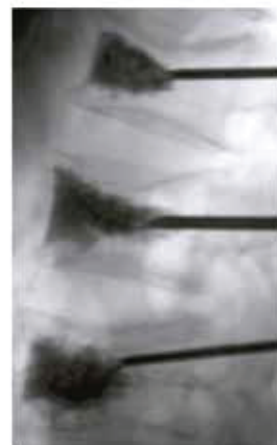


Viscosity profile of OSTEOFLEX® at 20°C

# Osteoflex

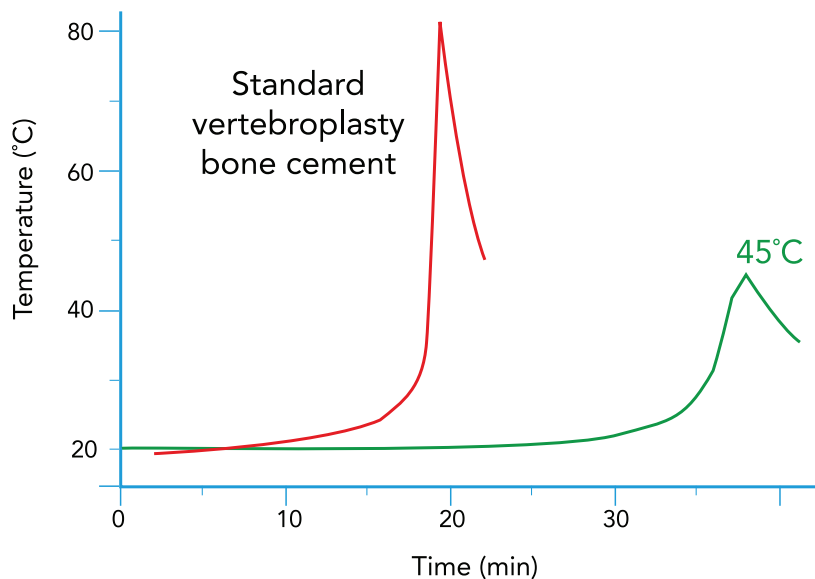
## Excellent radiopacity

High rate of zirconium dioxide opacifier for an ideal and maximum visibility during injection.



## Low exothermic reaction

This extraordinary low exothermic reaction of OSTEOFLEX® prevents the risk of thermic necrosis of bone tissue, in comparison with standard bone cements.



## Product Codes

	Product	Contents
INTV-OSFL	Osteoflex Bone Cement Kit	Cement mixer & bone cement
INTV-CEM	Osteoflex Bone Cement	Osteoflex bone cement
INTV-CDK	Cement Delivery Kit	Cement Mixer, bone cement and Maxinject delivery gun
INTV-MIG	Maxinject Gun	Maxinject gun and extension hose
INTV-S5	OsteoGun Cement Delivery System	OsteoGun, Extension Line, Shaker



**Your partner in healthcare™**

**Pan Medical U.S. Corp., (PanMed)**  
**Omni Business Park, Building V - Suite 505,**  
**7401 114th Avenue N, Largo, FL 33773. USA**

Patent #: 10,368,932 B2

**telephone: +1 (601) 919 1119 | email: [sales@zavation.com](mailto:sales@zavation.com) | [www.zavation.com](http://www.zavation.com)**