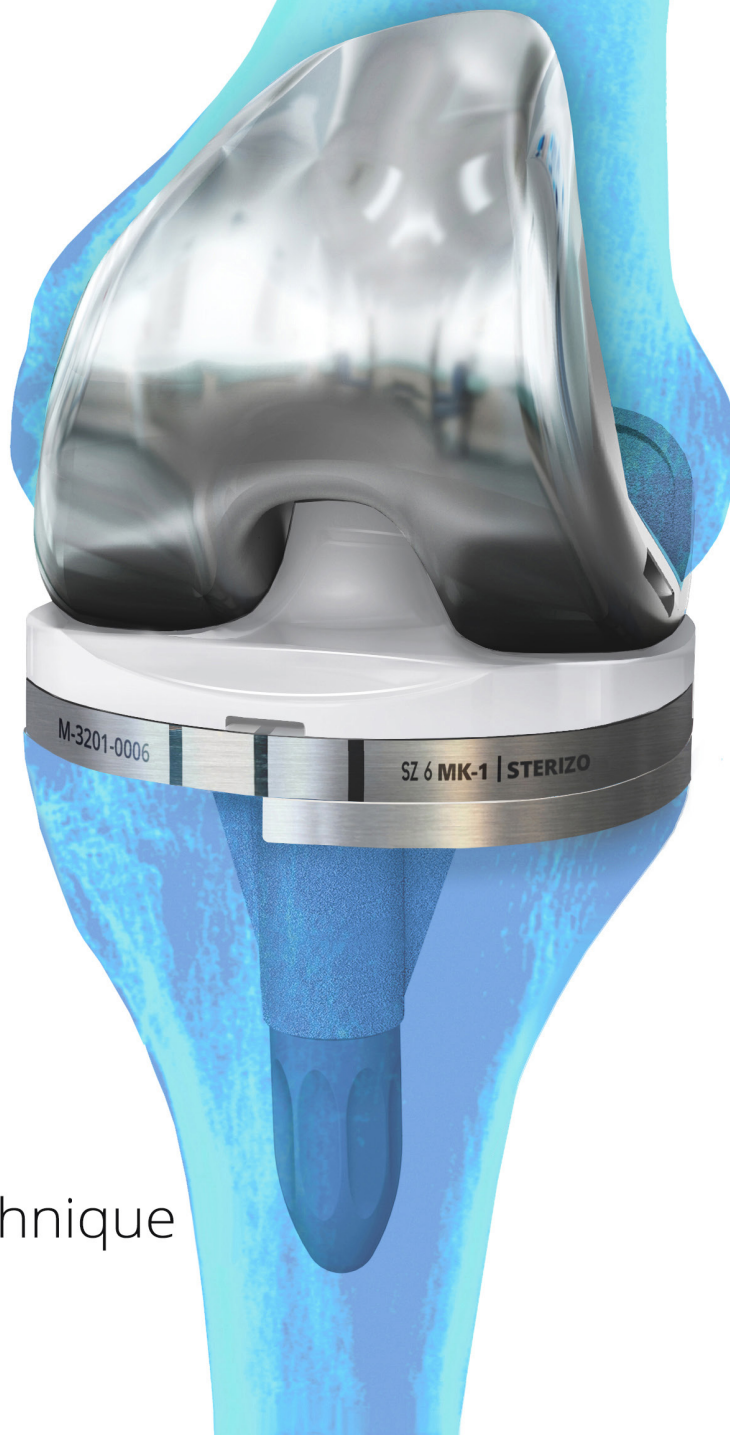




STERIZOTM

PRIMARY MODULAR TIBIA



Surgical Technique

Primary Modular Tibia

Prepare the femur and proximal tibia as outlined in the Primary Surgical Technique SXT-S-001 REV A.

Short Tibial Stem Preparation

After resection of the proximal tibia, select the appropriately sized **Tibial Tray Template**. Connect the **Tibial Tray Template Handle** to the Tibial Tray Template and rotate the dial on the handle clockwise to secure. The **Alignment Rod** may be dropped into the hole on the Tibial Baseplate Template Handle and used to aid for alignment and rotation.

Place the Tibial Tray Template onto the resected surface of the proximal tibia, then secure in place using two **Headed Pins** (Figure 1).

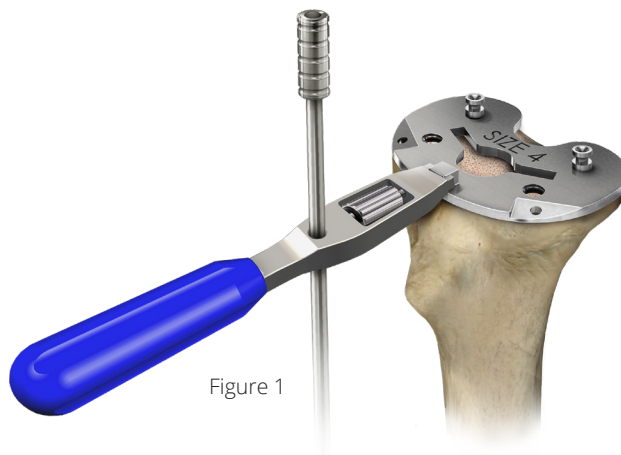


Figure 1

Attach the corresponding size **Broach Drill Guide** to the template. Select the proper size **Tibial Keel Drill** and ream through the Drill Guide until the stop on the drill is fully seated. Sizes 0-3 use Small and sizes 4-6 use Large (Figure 2).

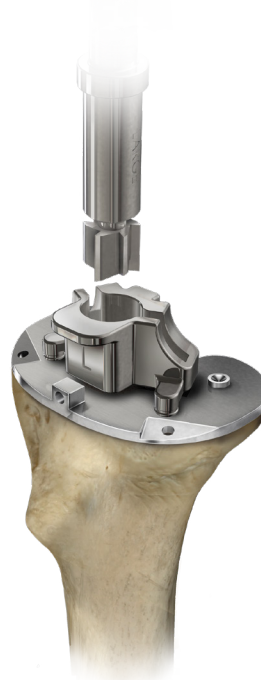


Figure 2

Tibial Tray Template
M-3211-000X-R



Tibial Tray Template Handle
M-3220-5011-R



Alignment Rod
M-3120-5028



Headed Pin
M-3220-5015



Broach Drill Guide
M-3220-5060-X

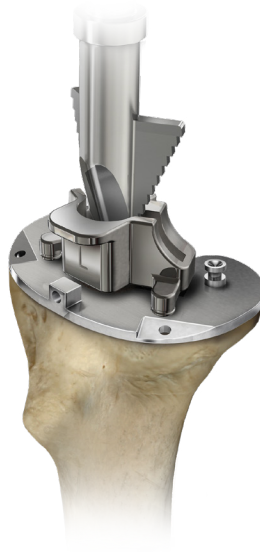


Tibial Keel Drill
M-3220-5061-X



Remove the drill, attach the **Tibial Keel Broach** to the **Modular Handle**, and mallet through the **Broach Drill Guide** until the stop is fully seated (Figure 3)

Figure 3



Tibial Keel Broach
M-3220-5063 (Small)
M-3220-5064 (Large)



Inline Impact Handle
G910100



Remove the **Tibial Broach** from the tibia (figure 4) then ream with the **14mm Reamer** through the **Broach Drill Guide** to the appropriate depth marked on the Reamer (Figure 5, 6).

Remove 14mm Reamer and Broach Drill Guide.

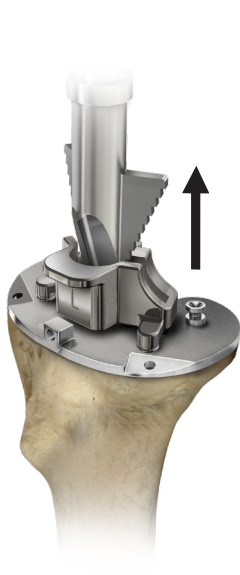


Figure 4

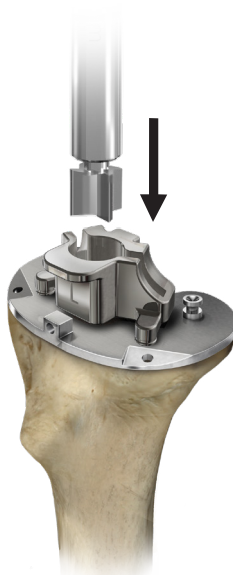


Figure 5



Figure 6

Tibial Stem Reamer 14mm
M-3220-5062-14



Tibial Augment Preparation

Attach the left or right **Augment Resection Guide** to the front of the **Tibial Tray Template** by turning the Thumb Screw clockwise. Secure the Augment Resection Guide to the proximal tibia with three **Long Pins** (Figure 7). Once the **Resection Guide** is secure, the Tibial Tray Template and Thumb Screw can be removed. Use a **.05in/1.27mm Oscillating Sawblade** to resect for the indicated augment. When resecting for the 5mm Augment utilize the surface of the Resection Guide. Slots are indicated for 10mm and 15mm Augment resections (Figure 8).

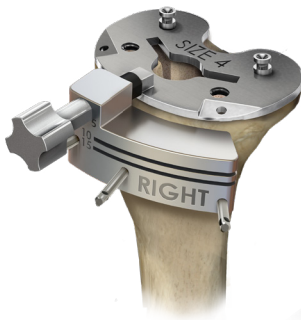


Figure 7

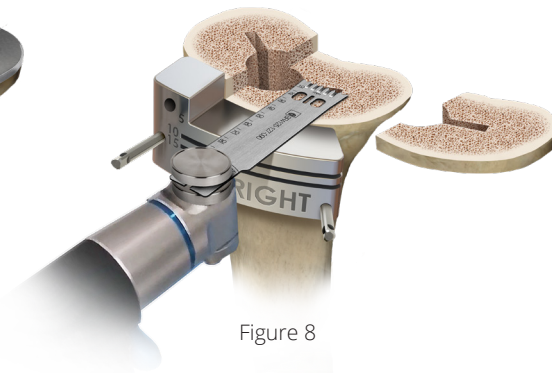


Figure 8

Trial Assembly

To assemble the **Stem Trial** to the **Tibial Augment Trial**, insert the Stem Trial into the distal end of the Tibial Augment Trial. Connect the **Tibial Tray Trial Screwdriver T20** to the **Inline Handle AO**. Ensure the stem is fully engaged inside the Tibial Tray Trial, by inserting the T20 driver into the head of the screw housed within the proximal portion of the Tibial Tray Trial and turn the screw clockwise (Figure 9).

To assemble the **Tibial Augment Trial** to the Tibial Tray Trial, snap the Tibial Augment Trial to the appropriate medial or lateral side of the Tibial Tray Trial (Figure 10)



Figure 9



Figure 10

Tibial Augment Resection Guide L/R
M-3220-507X



Stem Trial
M-3212-xxxx



Tibial Baseplate Trial
M-3211-100x-R



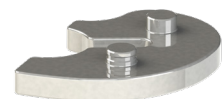
Tibial Tray Trial Screwdriver, T20, QC
M-3220-5071



Inline Handle, AO, QC
M-00008



Tibial Augment Trial
M-3212-4XXX-X



Implant Assembly

To assemble the **Tibial Augment** to the **Modular Tibial Tray Implant**, use the **Inline Handle AO** with the **Augment Screwdriver T8** to tighten the two **Augment Screws** that are packaged with the Augment. Firmly tighten the screws. Note – the 5mm Augments are universal and can be used on either the medial or lateral side by turning the Augment over (Figure 11).

Figure 11



To assemble the **Tibial Stem** to the Modular Tibial Tray Implant, place the Modular Tibial Tray Implant on the back table with the Stem Boss facing up, being sure to protect the proximal surface of the Tray. Place the Morse taper portion of the Stem into the Stem Boss. Using the Stem Impactor, firmly mallet the Stem in place (Figure 12).

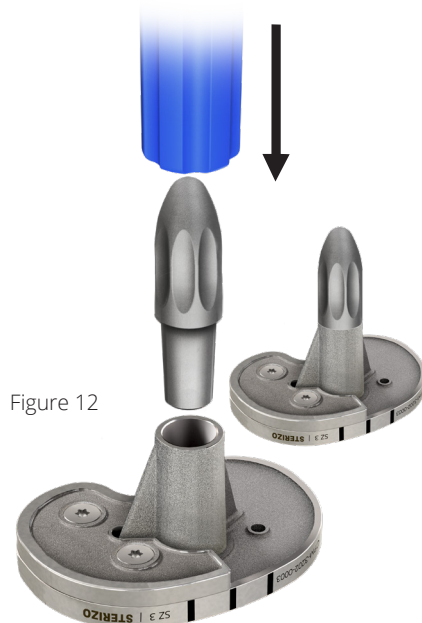


Figure 12



Figure 13

Note: If implanting the Revision Tibial Tray Implant without a stem, a Polyethylene Plug is available in a separate, sterile package. To assemble the Plug into the Tibial Tray, use digital pressure to engage the Plug in the Stem Boss. Complete the assembly by tapping the Plug with a mallet with the flat end of the Stem Impactor until fully seated (Figure 13).

Tibial Augment with Screws
M-3202-4XXX-X (Implant & Screws)



Modular Tibial Tray Implant
M-3202-000X



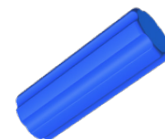
Tibial Augment Screwdriver,
T8, QC
M-3220-5070



Stem Implant
M-3202-XXXX



Stem Impactor
M-3220-5069



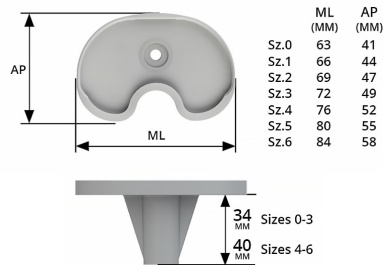
Tibial Tray Plug, Modular
M-3202-1000



STERIZO MODULAR TIBIAL IMPLANTS

Modular Tibial Tray

Modular Tibial Tray Ti-6AL-4V



| Catalog No. | Description |
|-------------|------------------------------|
| M-3202-0000 | Tibial Tray, Size 0, Modular |
| M-3202-0001 | Tibial Tray, Size 1, Modular |
| M-3202-0002 | Tibial Tray, Size 2, Modular |
| M-3202-0003 | Tibial Tray, Size 3, Modular |
| M-3202-0004 | Tibial Tray, Size 4, Modular |
| M-3202-0005 | Tibial Tray, Size 5, Modular |
| M-3202-0006 | Tibial Tray, Size 6, Modular |

Tibial Augment

Tibial Augment Ti-6AL-4V



| Catalog No. | Description |
|---------------|-----------------------------|
| M-3202-4005-N | Tibial Augment Size 0, 05mm |
| M-3202-4105-N | Tibial Augment Size 1, 05mm |
| M-3202-4205-N | Tibial Augment Size 2, 05mm |
| M-3202-4305-N | Tibial Augment Size 3, 05mm |
| M-3202-4405-N | Tibial Augment Size 4, 05mm |
| M-3202-4505-N | Tibial Augment Size 5, 05mm |
| M-3202-4605-N | Tibial Augment Size 6, 05mm |

Tibial Tray Plug

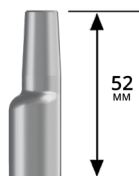
Poly Plug



| Catalog No. | Description |
|-------------|---------------------------|
| M-3202-1000 | Tibial Tray Plug, Modular |

Stem Offset Adapter

Stem Offset Adapter Ti-6AL-4V



| Catalog No. | Description |
|-------------|-------------------|
| M-3202-3002 | Stem Offset, 02mm |

Stems

Short Stem Ti-6AL-4V

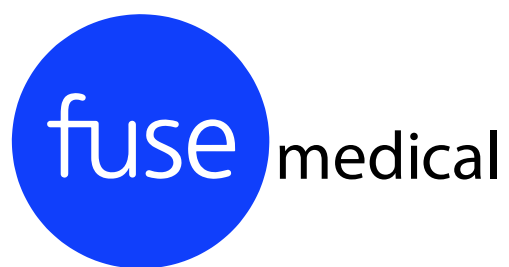


| Catalog No. | Description |
|-------------|-------------------|
| | Diameter x Length |
| M-3202-1210 | 12x100mm, Stem |
| M-3202-1275 | 12x75mm, Stem |
| M-3202-1410 | 14x100mm, Stem |
| M-3202-1430 | 14x30mm, Stem |
| M-3202-1475 | 14x75mm, Stem |
| M-3202-1610 | 16x100mm, Stem |
| M-3202-1675 | 16x75mm, Stem |
| M-3202-1875 | 18x75mm, Stem |
| M-3202-2075 | 20x75mm, Stem |

STERIZO MODULAR TIBIAL INSTRUMENTS

| Catalog No. | Description |
|----------------|---|
| M-3211-0000-R | Tibial Tray Template, Size 0 |
| M-3211-0001-R | Tibial Tray Template, Size 1 |
| M-3211-0002-R | Tibial Tray Template, Size 2 |
| M-3211-0003-R | Tibial Tray Template, Size 3 |
| M-3211-0004-R | Tibial Tray Template, Size 4 |
| M-3211-0005-R | Tibial Tray Template, Size 5 |
| M-3211-0006-R | Tibial Tray Template, Size 6 |
| M-3211-1000-R | Tibial Baseplate Trial, Size 0 Modular |
| M-3211-1001-R | Tibial Baseplate Trial, Size 1 Modular |
| M-3211-1002-R | Tibial Baseplate Trial, Size 2 Modular |
| M-3211-1003-R | Tibial Baseplate Trial, Size 3 Modular |
| M-3211-1004-R | Tibial Baseplate Trial, Size 4 Modular |
| M-3211-1005-R | Tibial Baseplate Trial, Size 5 Modular |
| M-3211-1006-R | Tibial Baseplate Trial, Size 6 Modular |
| M-3212-3002 | Stem Offset Trial, 02mm |
| M-3220-5062-14 | Tibial Stem Reamer 14mm |
| M-3220-5011-R | Tibial Tray Template Handle |
| M-3220-5064 | Tibial Keel Broach, Large |
| M-3220-5063 | Tibial Keel Broach, Small |
| M-00008 | Inline Handle AO, QC |
| M-3220-5071 | Tibial Baseplate Trial Screwdriver, T20 |
| M-3220-5070 | Augment Screwdriver, T8 |
| M-3220-5069 | Stem Impactor |
| M-3220-5060-L | Tibial Broach/Drill Guide, Large |
| M-3220-5060-S | Tibial Broach/Drill Guide, Small |
| M-3220-5074 | Augment Cut Block, Left |
| M-3220-5075 | Augment Cut Block, Right |
| G910100 | Modular Handle |

| Catalog No. | Description |
|---------------|---------------------------------|
| M-3212-4005-L | 5mm Augment Trial, Size 0 Left |
| M-3212-4005-R | 5mm Augment Trial, Size 0 Right |
| M-3212-4105-L | 5mm Augment Trial, Size 1 Left |
| M-3212-4105-R | 5mm Augment Trial, Size 1 Right |
| M-3212-4205-L | 5mm Augment Trial, Size 2 Left |
| M-3212-4205-R | 5mm Augment Trial, Size 2 Right |
| M-3212-4305-L | 5mm Augment Trial, Size 3 Left |
| M-3212-4305-R | 5mm Augment Trial, Size 3 Right |
| M-3212-4405-L | 5mm Augment Trial, Size 4 Left |
| M-3212-4405-R | 5mm Augment Trial, Size 4 Right |
| M-3212-4505-L | 5mm Augment Trial, Size 5 Left |
| M-3212-4505-R | 5mm Augment Trial, Size 5 Right |
| M-3212-4605-L | 5mm Augment Trial, Size 6 Left |
| M-3212-4605-R | 5mm Augment Trial, Size 6 Right |
| M-3212-1210 | Stem Trial, 12x100mm |
| M-3212-1275 | Stem Trial, 12x75mm |
| M-3212-1410 | Stem Trial, 14x100mm |
| M-3212-1430 | Stem Trial, 14x30mm |
| M-3212-1475 | Stem Trial, 14x75mm |
| M-3212-1610 | Stem Trial, 16x100mm |
| M-3212-1675 | Stem Trial, 16x75mm |
| M-3212-1875 | Stem Trial, 18x75mm |
| M-3212-2075 | Stem Trial, 20x75mm |



Fuse Medical, Inc.

4343 Sigma Road, Suite 500

Farmers Branch, TX 75244

469.862.3030

Info@FuseMedical.com

©2022 FUSE MEDICAL, INC.
Printed in the USA

Please refer to package insert for complete product information, including contraindications, warnings, precautions, and adverse effects.

STRO-SXT-001 REV D Effective Date 11/06/2024 DC-0332