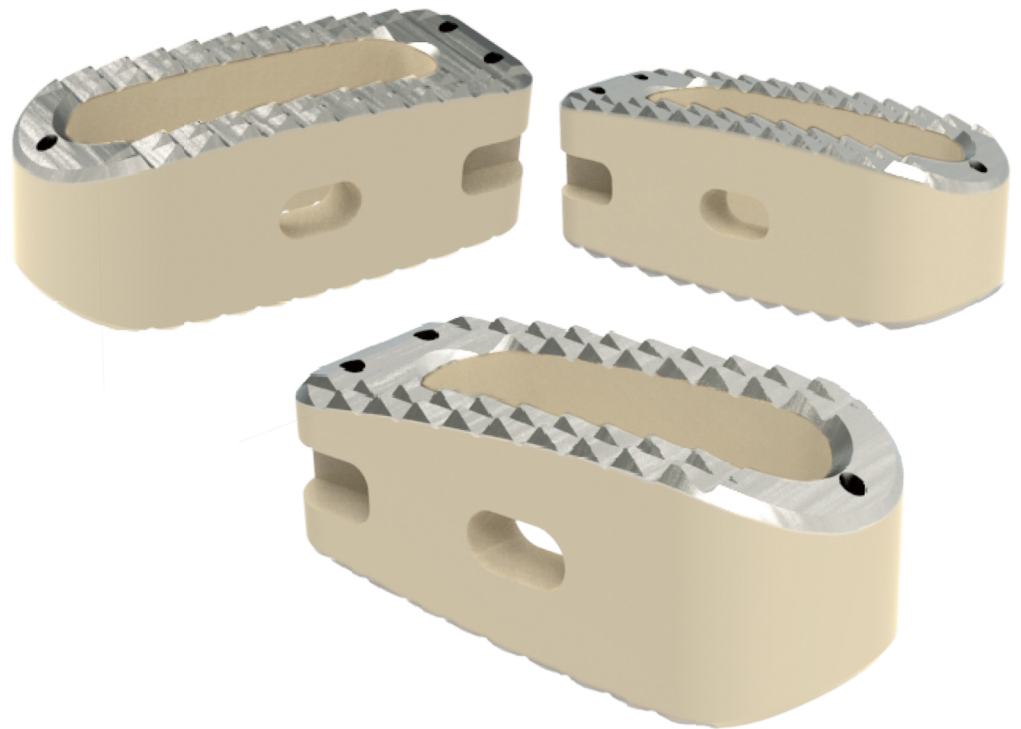
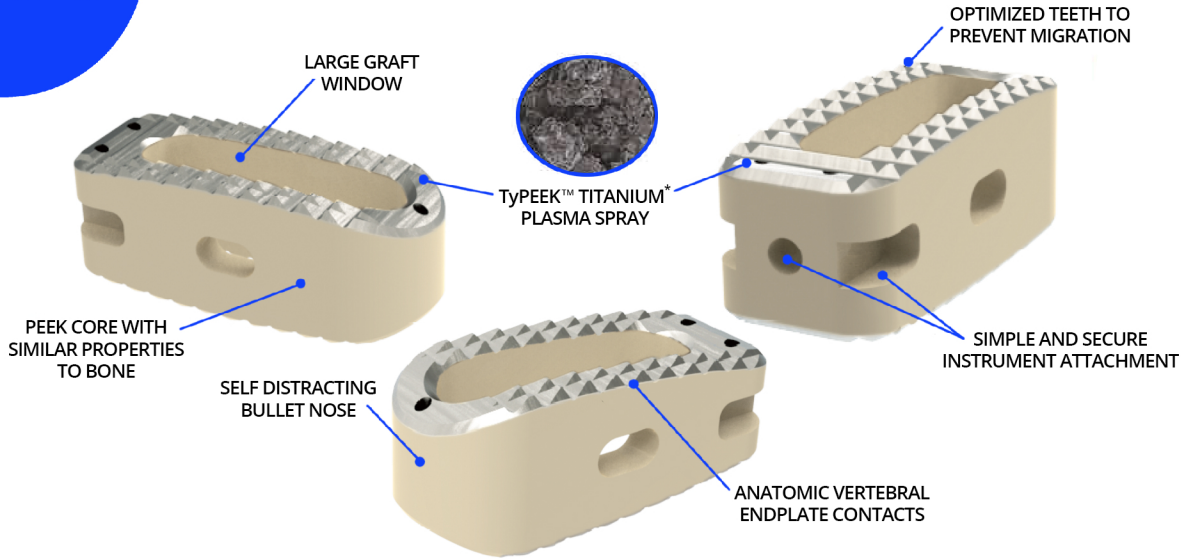




# PLIF Interbody Spacers

TyPEEK™ Titanium Plasma Spray Coating  
Anatomical Endplate Contacts  
Large Graft Window  
PEEK-Optima™ Core

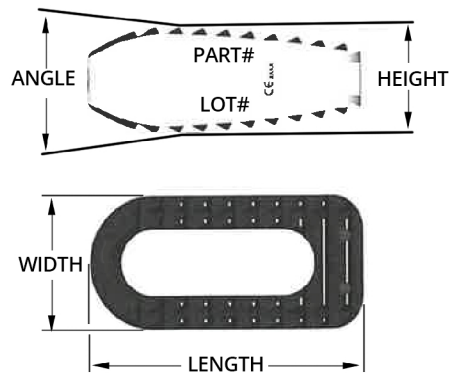




Interbody System - PLIF		
Height	L x W - Angle 0°	L x W - Angle 8°
	22 x 10mm	22 x 10mm
7mm	M2-P227010-S	M2-P227810-S
8mm	M2-P228010-S	M2-P228810-S
9mm	M2-P229010-S	M2-P229810-S
10mm	M2-P2210010-S	M2-P2210810-S
11mm	M2-P2211010-S	M2-P2211810-S
12mm	M2-P2212010-S	M2-P2212810-S
13mm	M2-P2213010-S	M2-P2213810-S
14mm	M2-P2214010-S	M2-P2214810-S
15mm	M2-P2215010-S	M2-P2215810-S

Interbody System - PLIF			
Height	L x W - Angle 0°	L x W - Angle 4°	L x W - Angle 8°
	24 x 10mm	24 x 10mm	24 x 10mm
7mm	M2-P247010-S	M2-P247410-S	M2-P247810-S
8mm	M2-P248010-S	M2-P248410-S	M2-P248810-S
9mm	M2-P249010-S	M2-P249410-S	M2-P249810-S
10mm	M2-P2410010-S	M2-P2410410-S	M2-P2410810-S
11mm	M2-P2411010-S	M2-P2411410-S	M2-P2411810-S
12mm	M2-P2412010-S	M2-P2412410-S	M2-P2412810-S
13mm	M2-P2413010-S	M2-P2413410-S	M2-P2413810-S
14mm	M2-P2414010-S	M2-P2414410-S	M2-P2414810-S
15mm	M2-P2415010-S	M2-P2415410-S	M2-P2450810-S

Interbody System - PLIF		
Height	L x W - Angle 0°	L x W - Angle 8°
	26 x 10mm	26 x 10mm
7mm	M2-P267010-S	M2-P267810-S
8mm	M2-P268010-S	M2-P268810-S
9mm	M2-P269010-S	M2-P269810-S
10mm	M2-P2610010-S	M2-P2610810-S
11mm	M2-P2611010-S	M2-P2611810-S
12mm	M2-P2612010-S	M2-P2612810-S
13mm	M2-P2613010-S	M2-P2613810-S
14mm	M2-P2614010-S	M2-P2614810-S
15mm	M2-P2615010-S	M2-P2615810-S



\*Titanium plasma sprayed coating on PEEK has been shown to encourage osseointegration [Walsh et. al. 2015]  
 \*\*Titanium is "Inherently Bioactive" [D. J. Hickey et al., 2015]

**Fuse Medical, Inc.**  
 4343 Sigma Rd., Suite 500  
 Farmers Branch, TX 75244  
 469.862.3030

info@fusemedical.com  
 www.fusemedical.com

BRO-PLIF-001 REV B - DC-0513